



# Global Partnerships & Locally-Led Approaches to Healthcare

- Insights from Nigeria's NTD Elimination Journey
- Presented by: Philip Ode – CBM Global, Programme Manager

# Introduction – What NTDs Are

## International Health

Mental Health, Stigma and Neglected Tropical Diseases: Part A

Neglected Tropical Diseases (NTDs) affect more than **1 billion people** globally, primarily in impoverished and tropical regions

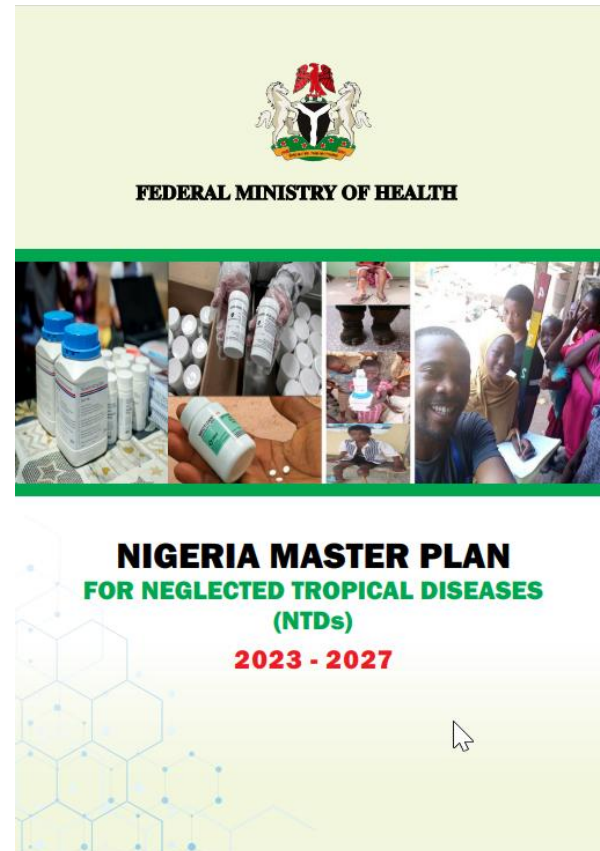
They are called "neglected" because they historically receive significantly less funding and global attention than diseases like HIV/AIDS or malaria, despite their massive impact on public health

In Nigeria, NTDs bring not only physical illness, but also social stigma, mental health distress, exclusion, and economic loss



# The Heart of the Story

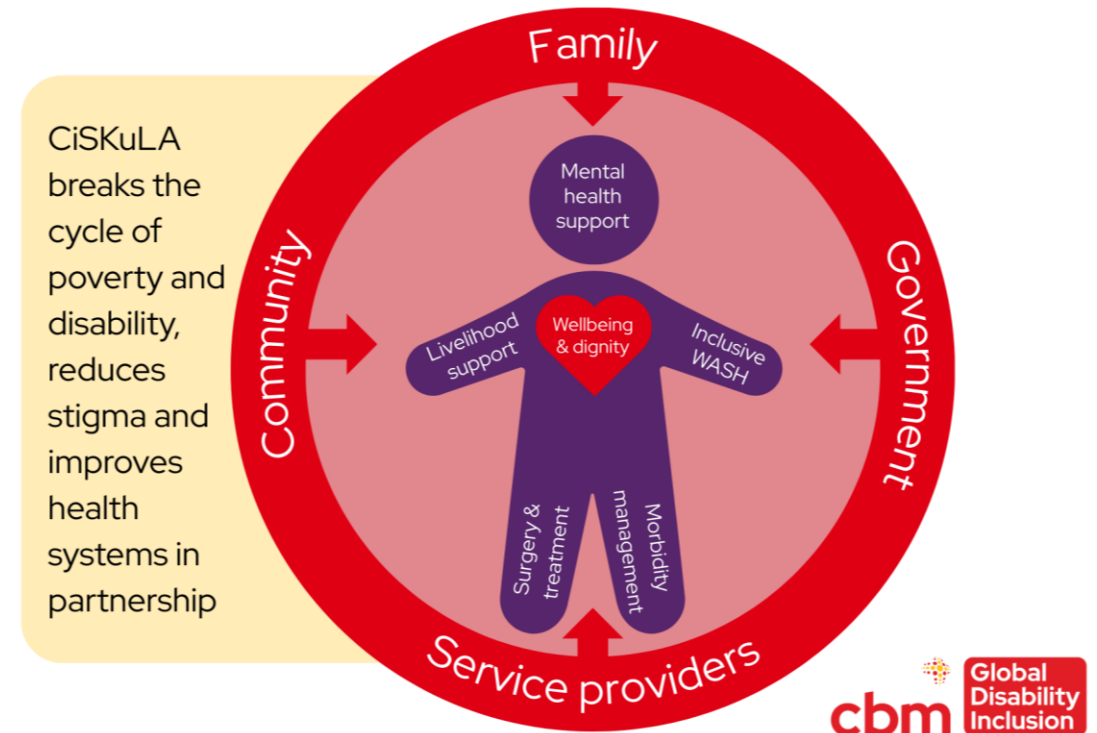
- Global partners and Local actors must collaborate for lasting change to happen



# CBM Global: NTDs Operational Research & Programmes - From Evidence to Impact

- **Neglected Mind–Skin Link** (*Task Force for Global Health funded*): [Microsoft Word - CBM UK Project Evidence Brief - Neglected Mind Skin Link updated](#)
- [CBM-UK-Neglected-Mind-Skin-Link-Project-Nigeria-Infographic.pdf](#) – operational research fed into:
- **WHO ECP**: [Essential care package to address mental health and stigma for persons with neglected tropical diseases](#) which provides practical, evidence-based guidance to help programmes integrate mental health and stigma reduction into routine NTD care.
- Practical delivery piloting in Nigeria:
- **mhCAP-NTDs** (*Anesvad Foundation funded*):
  - [CBM UK Project Evidence Brief #9 - mhCAP-NTDs](#)
- **CiSKuLA Project** (*CBM UK legacy funded*):
  - [CBM UK Project Evidence Brief CiSKuLA](#)

## CiSKuLA: Supporting People Affected by Neglected Tropical Diseases Using a Holistic, Person-centred Approach



# Case Study 1: Moving from Control to Elimination

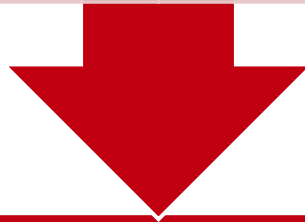
## The Integrated Control of NTDs project strengthened:

Medicine supply systems

Community-based drug distribution

Basic clinical support for long-term NTD complications

WASH and behavioural change interventions



This work enhanced state health systems and enabled Nigeria to take confident steps toward eliminating certain NTDs

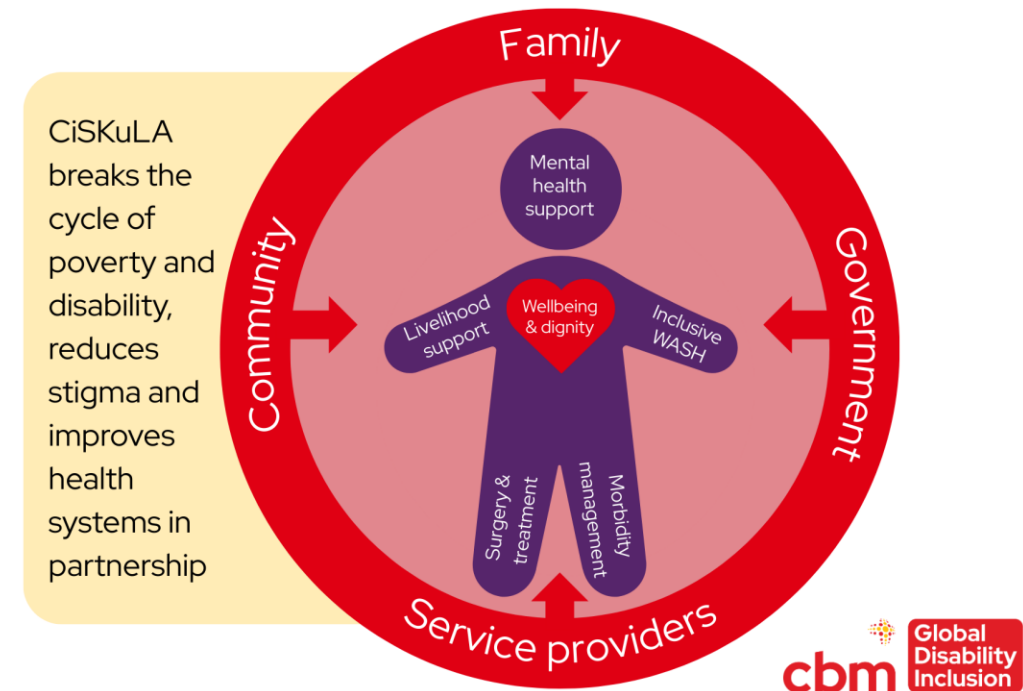


# Case Study 2: Restoring dignity through holistic care

- The CiSKuLA project showed that addressing health alone is not enough. People needed:

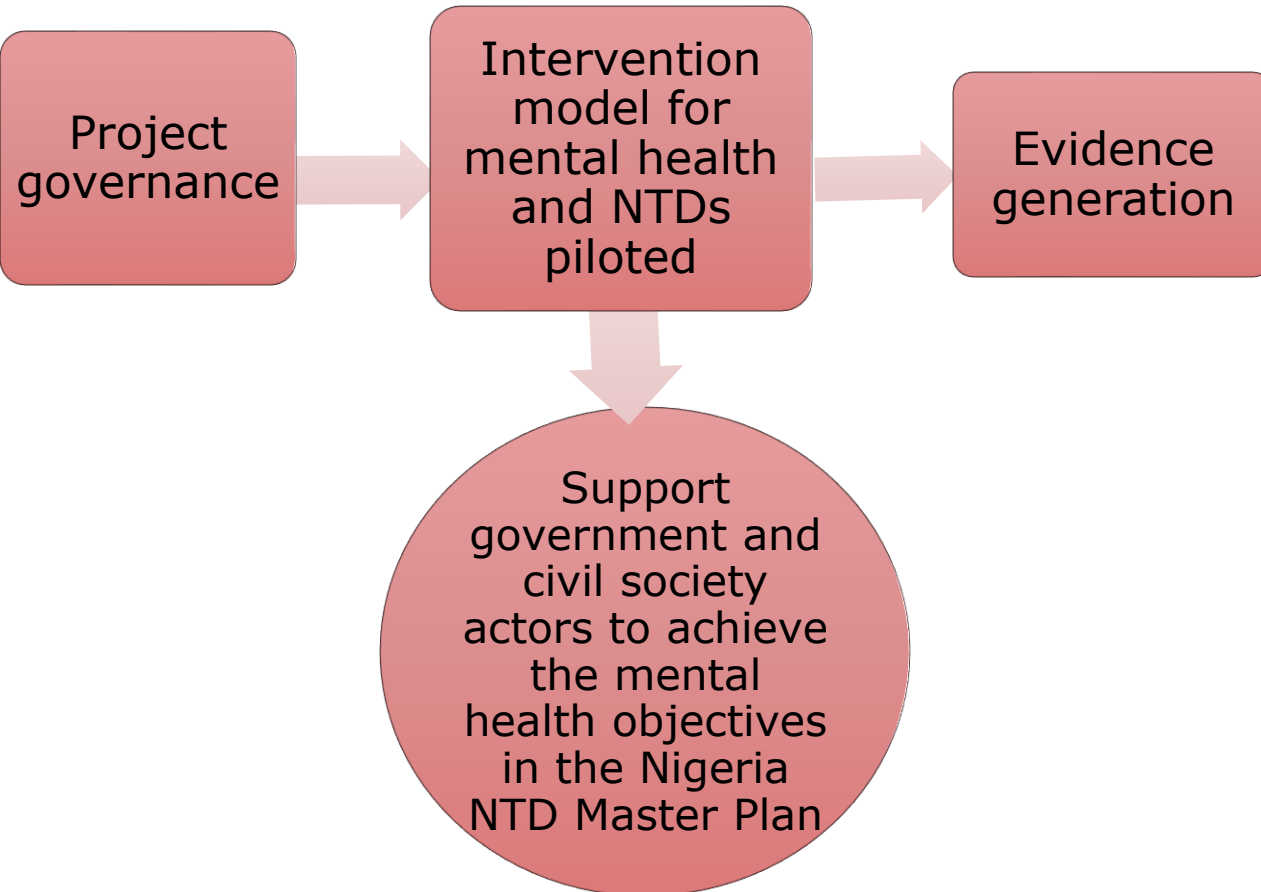
- Support for mental wellbeing
- Clean water and sanitation
- Reduced stigma
- Livelihood opportunities
- Community acceptance

**CiSKuLA: Supporting People Affected by Neglected Tropical Diseases Using a Holistic, Person-centred Approach**



- This holistic, community-rooted model helped people regain dignity and participation.

# Case Study 3: Integrating Mental Health with Local Systems



# Cross-Cutting Lessons

---

Across all three projects, several themes stand out

**Global partnerships unlock possibilities**

---

**Local leadership ensures relevance and longevity**

---

**Integrated approaches create lasting change**

---

**Strengthened local systems sustain progress**

---

# Why This Matters for Scotland and the UK

- Nigeria's experience offers guiding lessons for donor nations:
  - Locally-led development yields stronger, more equitable outcomes
  - Integrated, multi-sectoral approaches multiply impact
  - Supporting mental health within global health is essential
  - Donor investments should build systems, not parallel structures
- These principles align with Scottish and UK commitments to localization, human dignity, and sustainable global health partnerships



# Final Thought

---

*"The project didn't just treat illness. It healed the whole person."*  
— Community Leader,  
Nigeria

Global partnerships work best when they amplify the capacity, leadership, and resilience already present in communities

# Thank you for listening

---

